



24 Henderson Way, Scunthorpe, DN15 9SJ

£260,000

Sit on a great plot in the ever popular township of Winterton, this three bed detached house is neutrally decorated throughout and has a fantastic open plan kitchen diner. The ground floor also benefits from an entrance hall, separate utility room, lounge with an inglenook fireplace and a downstairs W.C. Upstairs there are three good size bedrooms, the main having an en suite and a family bathroom. Outside has a south facing rear garden with a patio and lawned area, garage and off road parking for a couple of cars. Please get in touch to book your viewing.



Entrance Hall



Bedroom One 12'2" x 9'4" (3.71 x 2.86)



En Suite



Lounge 17'1" x 12'1" (5.23 x 3.70)



Kitchen Diner 18'6" x 12'2" (5.64 x 3.73)



Utility Room 10'1" x 5'2" (3.09 x 1.58)



First Floor Landing

Bedroom Two 12'1" x 10'4" (3.70 x 3.15)



Bedroom Three 8'5" x 7'0" (2.57 x 2.15)



Family Bathroom

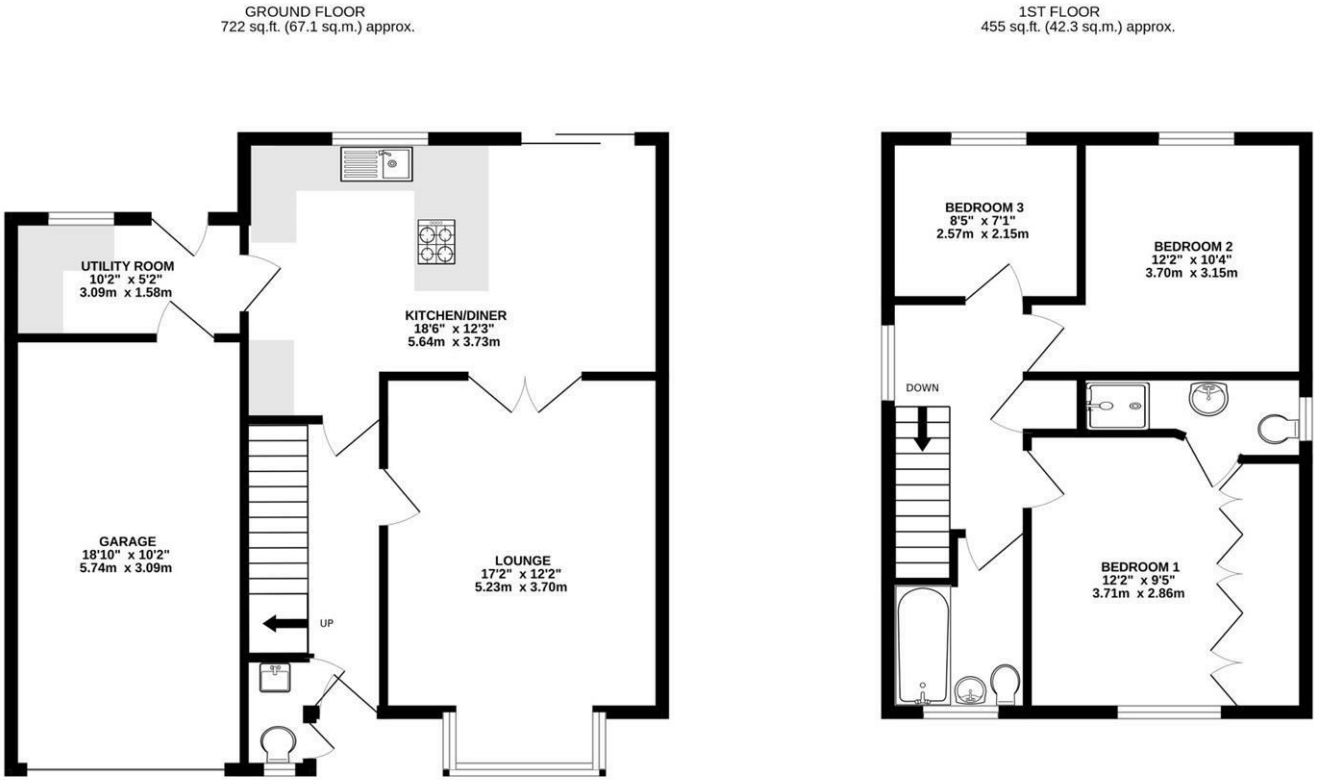


Garage 18'9" x 10'1" (5.74 x 3.09)

Outside



Floor Plan



TOTAL FLOOR AREA : 1177 sq.ft. (109.4 sq.m.) approx.

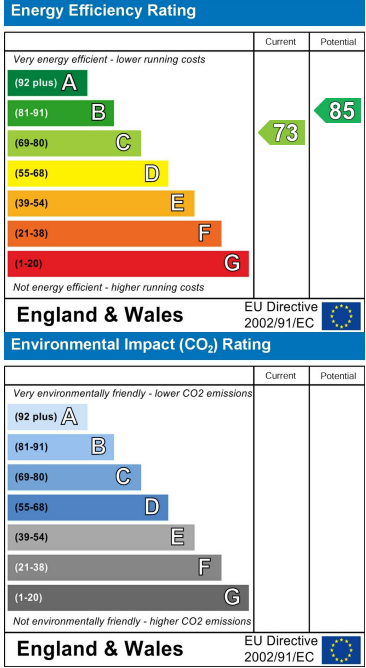
Whilst every attempt has been made to ensure the accuracy of the floorplan contained here, measurements of doors, windows, rooms and any other items are approximate and no responsibility is taken for any error, omission or mis-statement. This plan is for illustrative purposes only and should be used as such by any prospective purchaser. The services, systems and appliances shown have not been tested and no guarantee as to their operability or efficiency can be given.

Made with Metropix ©2025

Area Map



Energy Efficiency Graph



These particulars, whilst believed to be accurate are set out as a general outline only for guidance and do not constitute any part of an offer or contract. Intending purchasers should not rely on them as statements of representation of fact, but must satisfy themselves by inspection or otherwise as to their accuracy. No person in this firms employment has the authority to make or give any representation or warranty in respect of the property.